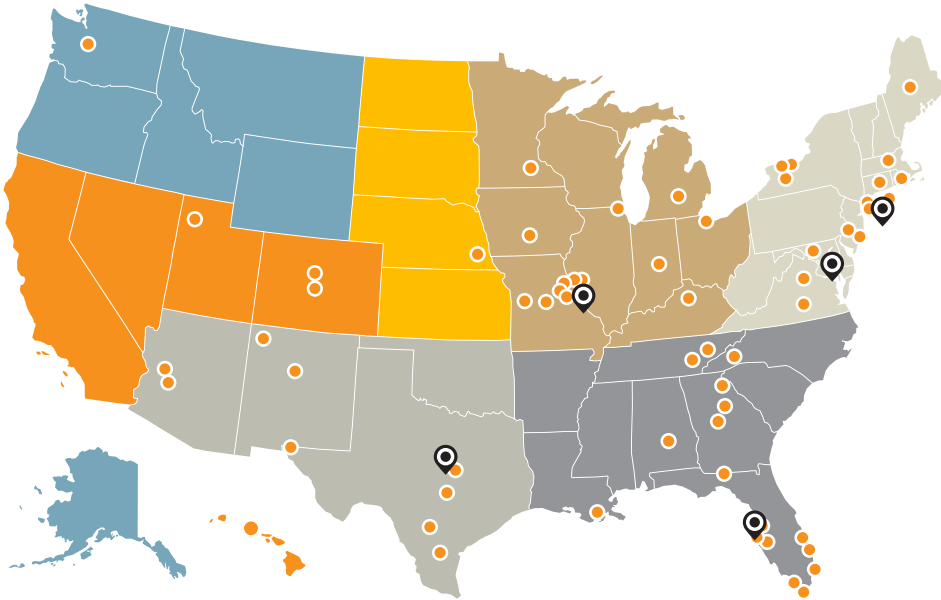


Wyman's Teen Outreach Program® (TOP®) is one of the most successful, cost-effective and highly respected programs for teens nationally.









📍 Wyman's Office Locations    ● Certified Replication Partner

Wyman's Regional Organization: ■ Northwest ■ West ■ Great Plains ■ Southwest ■ Midwest ■ Southeast ■ Northeast



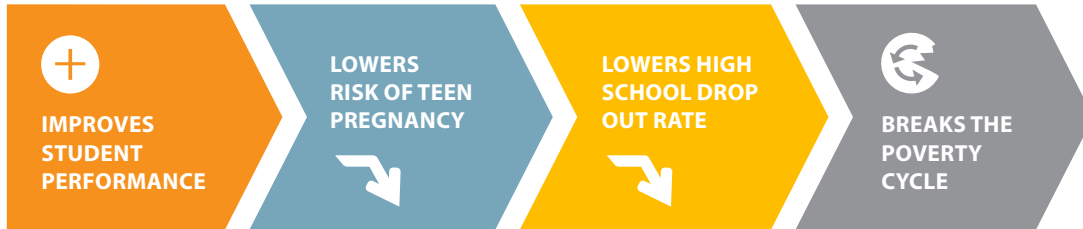
**TOP IS USED NATIONWIDE** TO IMPROVE ORGANIZATIONAL CULTURE AND CLIMATE, ENHANCE TEEN AND ADULT RELATIONSHIPS AND CHANGE THE WAY SYSTEMS APPROACH TRADITIONAL DEVELOPMENT—FROM EDUCATIONAL AND ADOLESCENT HEALTH SETTINGS, TO JUVENILE JUSTICE AND FOSTER CARE SETTINGS.

**TOP IS A COMPREHENSIVE YOUTH DEVELOPMENT STRATEGY THAT ACHIEVES RESULTS:**

- 
 IMPROVES ORGANIZATIONAL CULTURE AND CLIMATE
 +
- 
 ENHANCES TEEN AND ADULT RELATIONSHIPS
 +
- 
 IGNITES TEEN LEADERSHIP POTENTIAL
 +
- 
 BUILDS ADULT CAPACITY
 +
- 
 CREATES SYSTEMS-LEVEL CHANGE
 +
- 
 TRANSFORMS COMMUNITIES
 +

**35,000+**  
 TEENS SERVED ANNUALLY

TOP can help break the cycle of poverty—preventing teen pregnancy and lowering high school drop out rates.



TEEN CHILDBEARING IN THE U.S. COSTS TAXPAYERS AT LEAST

**\$9.4**  
BILLION ANNUALLY

IN COSTS FOR HEALTH CARE, FOSTER CARE, INCARCERATION AND LOST TAX REVENUE.<sup>1</sup>

DROPOUTS ARE MORE THAN

**8X**

MORE LIKELY TO SPEND TIME IN JAIL OR PRISON<sup>3</sup>

**TEEN PARENTS**

ARE MORE LIKELY TO DROP OUT OF SCHOOL AND LIVE IN POVERTY

**\$17** BILLION SAVINGS IN HEALTH CARE COSTS OVER LIFETIME OF DROPOUTS HAD THEY EARNED THEIR DIPLOMAS.<sup>4</sup>

**1.2 MILLION** APPROXIMATE NUMBER OF DROPOUTS EACH YEAR IN THE U.S.<sup>2</sup>

**TOP'S COST-EFFECTIVE APPROACH**

IS GROUNDED IN CONTEMPORARY RESEARCH AND NATIONALLY RECOGNIZED AS A PROVEN BEST PRACTICE:

U.S. Department of Health and Human Services, Office of Adolescent Health

U.S. Department of Justice, Office of Juvenile Justice and Delinquency Prevention

Substance Abuse and Mental Health Services Administration's National Registration of Evidence-Based Programs and Practices

The Center for the Study and Prevention of Violence: Blueprints for Healthy Youth Development

**TOP RESULTS**



LOWER RISK OF TEEN PREGNANCY



LOWER RISK OF SCHOOL SUSPENSION



LOWER RISK OF ACADEMIC FAILURE



LOWER RISK OF SCHOOL DROPOUT



LEARN HOW TO DEAL WITH LIFE'S CHALLENGES THROUGH COMMUNITY SERVICE

<sup>1</sup> Counting It Up: The Public Costs of Teen Childbearing; The National Campaign to Prevent Teen and Unplanned Pregnancy. <https://thenationalcampaign.org/why-it-matters/public-cost>

<sup>2</sup> Cities in Crisis, America's Promise, Closing the Graduation Gap, <http://www.americaspromise.org/cities-crisis>

<sup>3</sup> Calculations based on Harlow, C. W. (revised 2003). Education and Correctional Populations. Bureau of Justice Statistics Special Report. Washington, DC: U.S. Department of Justice Accessed at: [www.ojp.usdoj.gov/bjs/pub/pdf/ecp.pdf](http://www.ojp.usdoj.gov/bjs/pub/pdf/ecp.pdf).

<sup>4</sup> Friedman Foundation, 2008 and Alliance for Excellent Education